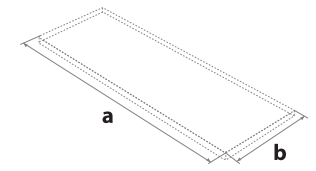
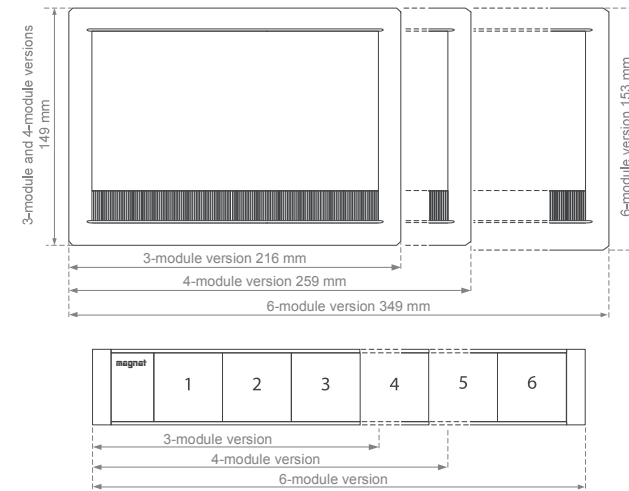


magnet-Box



Mounting hole dimensions:

| version | a x b |
|----------|-----------------|
| 3-module | 200 mm x 139 mm |
| 4-module | 243 mm x 139 mm |
| 6-module | 329 mm x 139 mm |

+1mm/ -0mm

* In case of configurations with two circuits or with UK power sockets number of available modules is lower.



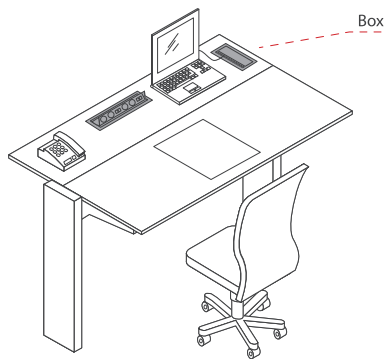
magnet-Box

Hinged box built-in the table top / desk. Due to its functionality **magnet-Box** is a perfect solution for workplaces. It allows to hide power sockets and multimedia ports under the table top. Cover with brush strip enables ergonomic use of the box in opened and closed position.

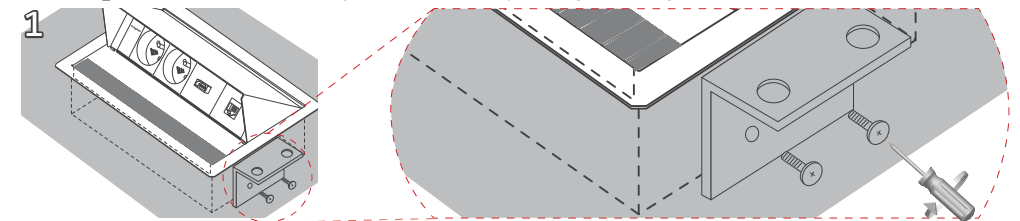
magnet-Box gives the opportunity to suit the client's needs because of the wide range of power sockets and multimedia ports, as well as available colours and sizes.

■ Standard versions:
3-module, 4-module, 6-module.

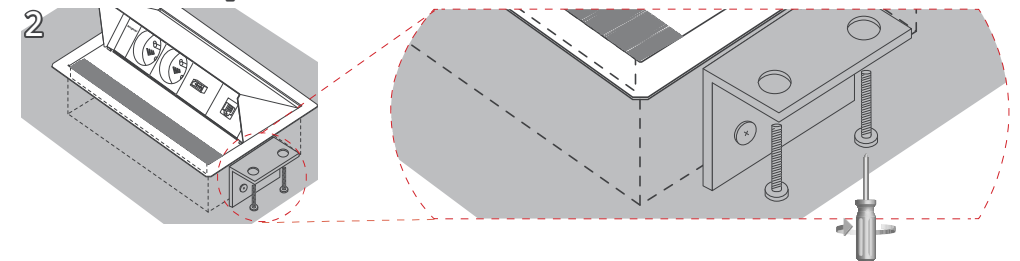
■ System used in **magnet** product line allows to adopt the configuration to individual client's needs because of available power sockets and multimedia modules. More information on page 28.



Insert **magnet-Box** into the mounting hole and assembly it using mounting brackets.



Use M5 screws to fix **magnet-Box** to the desk.



Assembling to the table top / desk of up to 30 mm thickness.

Assembling to the table top / desk of up to 50 mm thickness.

