

Mounting hole dimensions:

version	a x b
2-module	152 mm x 50 mm
3-module	195 mm x 50 mm
4-module	239 mm x 50 mm
6-module	323 mm x 50 mm

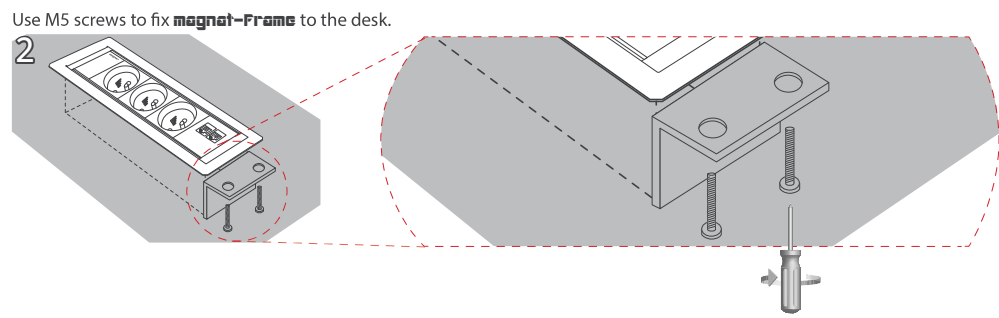
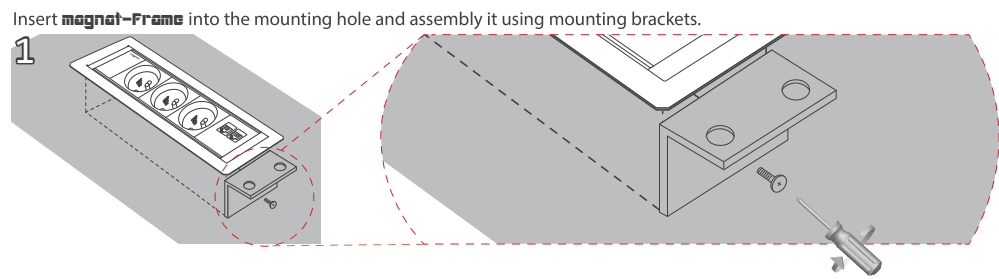
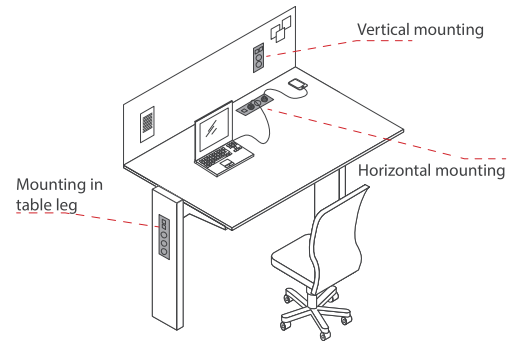
+1mm/-1mm

* In case of configurations with two circuits or with UK power sockets number of available modules is lower.



magnet-Frame
Multimedia frame intended for installation in the table top / desk, table leg or dividing wall. **magnet-Frame** gives permanent and easy access to power sockets and multimedia ports. Its modern and simple design makes **magnet-Frame** an elegant part of every workplace.

- Standard versions: 2-module, 3-module, 4-module, 6-module.
- System used in **magnet** product line allows to adopt the configuration to individual client's needs because of available power sockets and multimedia modules. More information on page 28.



Assembling to table top / desk of up to 30 mm thickness.

